

## Room temperature

### TM-1100

#### Room command module

The TM-1100 series of room command modules are designed for use with the TC-9102, TC-9109 and TCU series of DDC terminal unit controllers.

The setpoint dial enables the room occupant to adjust the working set point of the controller within the range of 12...28 °C or -3...+3°, according to the model number.

The occupancy button enables the occupant to switch the mode of operation of the controller between COMFORT and STANDBY or to request a temporary COMFORT mode during NIGHT operation.

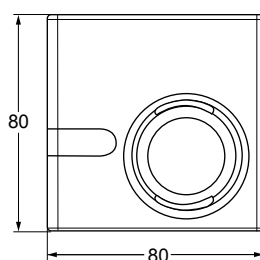
A LED indicator shows the current operating mode.

For TC-9102 and TCU fan coil unit controllers, a room command module with a 3-speed fan override is available. Models without a temperature sensing element are provided for application where the temperature sensor is mounted inside the fan coil unit.

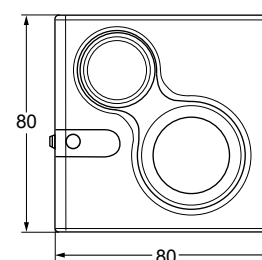
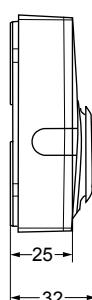


### Features

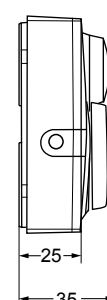
- ▶ Passive sensor
- ▶ NTC K2 temperature output
- ▶ Remote temperature setpoint adjustment
- ▶ 3-speed fan override
- ▶ Occupancy override button
- ▶ Room enclosures 80 x 80 mm
- ▶ Protection class: IP30



TM-1140-0000



TM-1160-0007 and TM-1170-0007



### Ordering information

Dimensions in mm

Codes	Built-in sensing element	Temperature setpoint dial scale	Fan speed override	Occupancy button
TM-1140-0000	NTC K2	---	---	---
TM-1150-0000		12...28 °C		
TM-1160-0000		+/-	3-speed fan override	
TM-1160-0005		12...28 °C		
TM-1160-0002		+/-		
TM-1160-0007	Without	---	3-speed fan override	
TM-1170-0005		12...28 °C		
TM-1170-0007	---	---		
TM-1190-0000	NTC K2	12...28 °C	---	---
TM-1190-0005		+/-		

### Accessories (order separately)

Codes	Description
TM-1100-8931	Plastic base for surface mount
TE-9100-8501	Unit mount NTC K2 temperature sensor (1.5 m cable)
TM-9100-8900	Special tool for opening enclosure